

An ISO 9001:2015 Certified Organization



FOUNDATION

Ability to Sustainability



ANNUAL REPORT 2021-22

सत्येन धार्यते पृथिवी। Truth holds the Earth.

From Director's Desk

We at Pruthvi molachi foundation up hold the ethos and values of environment and its conservation along with sustainability. We started with the small Idea and have evolved to be a change. From various events activities and awareness programs we are trying to play a small role in helping plug the gaps with a vision to make our habitat more healthy and sustainable.

Our members and volunteers are young and enrich of sustainable environment experience with a lot of gist to make a change. Networking and collaborating with National and international NGO, CBO, CSR firms is now our upcoming aim. Along with our presence in urban areas like Pune, Navi Mumbai, Aurangabad etc., We have our office setup in mahupada a small tribal Hamlet in the dhule district where we are currently working with tribal communities. Seed idea to arranging a first South Asian conference on environment, we have established of foot mark in this field and we will keep doing so. We are much obliged with all the support we have got so far from all the people and express our gratitude towards them.

I would like to end this note with a simple saying,

"The earth is what we all have in common so, let's work towards the common goal and create a heaven for mankind."



Niharika S Belwalkar
Director,
Pruthvi Molachi Foundation



Organization Profile

Pruthvi Molachi Foundation is a non-profit organization registered in August 2020 under Section 8 of Companies Act 2013. With our head office at Dondaicha, Dist. Dhule, Maharashtra; our work has spread stably. We are working for conservation and development of various environmental, wildlife and rural issues in sustainable and innovative ways.

Overviewing various obstacles in fulfilling of the Sustainable Development, we a group of social and environmental enthusiasts came together and formed the NGO to catalyse the process of development and conservation. Our team includes Environmentalists, Geologists, Entrepreneurs, Researchers, Statisticians, Microbiologists and Grass-root social workers. All of us had previously done various projects or social activities which have shown a positive impact on society. Having Local Information and Global Knowledge, we ensure the sustainability of projects and its positive impact on society. Since our inception itself, we are working closely with tribal communities settled around the forests, especially in Dhule District of Maharashtra State. Along with this, we were also involved in various activities related to environment and rural development based on our strength. We strongly believe that tradition and culture plays a vital role in fulfilling the developmental process with a strategic use of Behaviour Change Communication (BCC).

We also have developed partnerships with many organization according to their respective expertise and location of work. We are also keen to work to find out innovative and sustainable solutions for the fulfilment of developmental needs.

Address:

Registered Office:

Shri Gopalkrushna Mandir, Gopalpura, Dondaicha, Dist. Dhule, Maharashtra. Pin Code: 425408.

Phone: +91 7038081829, Email: contact@pruthvimolachi.org

Pune Office:

C-503, DSK Vidyanaagri, Pashan-Sus Road, Baner, Pune, Maharashtra.

Pin Code: 411021

Aurangabad Office:

C/O Ajaykumar Raut, B-45, 'SaiRaj', First Floor, Behind Taramati Bhavan, Shivshankar Colony, Aurangabad, Maharashtra. Pin Code: 431001

Other Temporary or Field Offices are at Navi Mumbai, Nashik, Kolhapur, Lohgad Nandra, Bodwad and Mahupada.

Registrations:

- Company Identification Number (CIN) : U85300PN2020NPL192702
- Section 8 License No : 119739
- PAN Number : AALCP3092P
- TAN Number : NSKP09570B
- 80G Registration Number : AALCP3092PF20227
- 12A Registration Number : AALCP3092PE20211
- CSR1 Registration Number : CSR00020082



NGO Darpan Unique ID :
MH/2020/0262671



GuideStar Number (GSN)
12609

Our Team



Parag Panchabhai

Director | DIN: 08823001

Environmentalist, working in the field of social development and NGO Management
B.Tech. (Environment), PG (Development Management)



Niharika Belwalkar

Director | DIN: 08823002

Environment Engineer, working in the field of process designing and environmental services
B.Tech. (Environment), M.E. (Environmental Science)



Kruttika Deshpande

Member of Council
Statistician,
Working in Data Science Sector
M.Sc. (Statistics)



Anagha Raut

Member of Council
Environmentalist,
Assistant Professor
M.Sc. (Environment)



Mayuri Jadhav

Member of Council
Environmentalist,
Working in Energy Sector
M.Tech (Energy)



Ajaykumar Raut

Member of Council
Organic Farming Expert,
Working in IT Sector
B.A. (English & History)



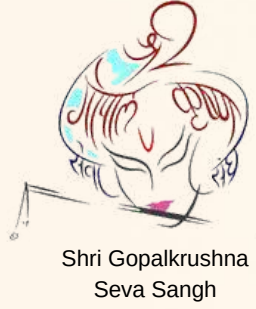
Umesh Deshmukh

Member of Council
Farmer, Working for Rural and
Tribal Development
Higher Secondary School (10+2)

Supporting Council Members

Aarti Parker | Ruchita Panchbhai | Umesh Ghusalkar | Sanket Awasare | Keshav Patil
Ranjit Deulkar | Ashwini Barve | Revti Patil | Rashmi Joshi | Shilpa Bhagde | Ankush Pujari
Mahesh Padhye | Dipak Hajare | Bhushan Petkar

Our Partners in Development



Shri Gopalkrushna
Seva Sangh



Krushnadvaipayan Gurukul



CHEZUBA



Gramin Tattva



Raje Shivchhatrapati
Sarvajanic Vachnalay,
Lohgad Nandra



Sathe Engineers
& Contractors



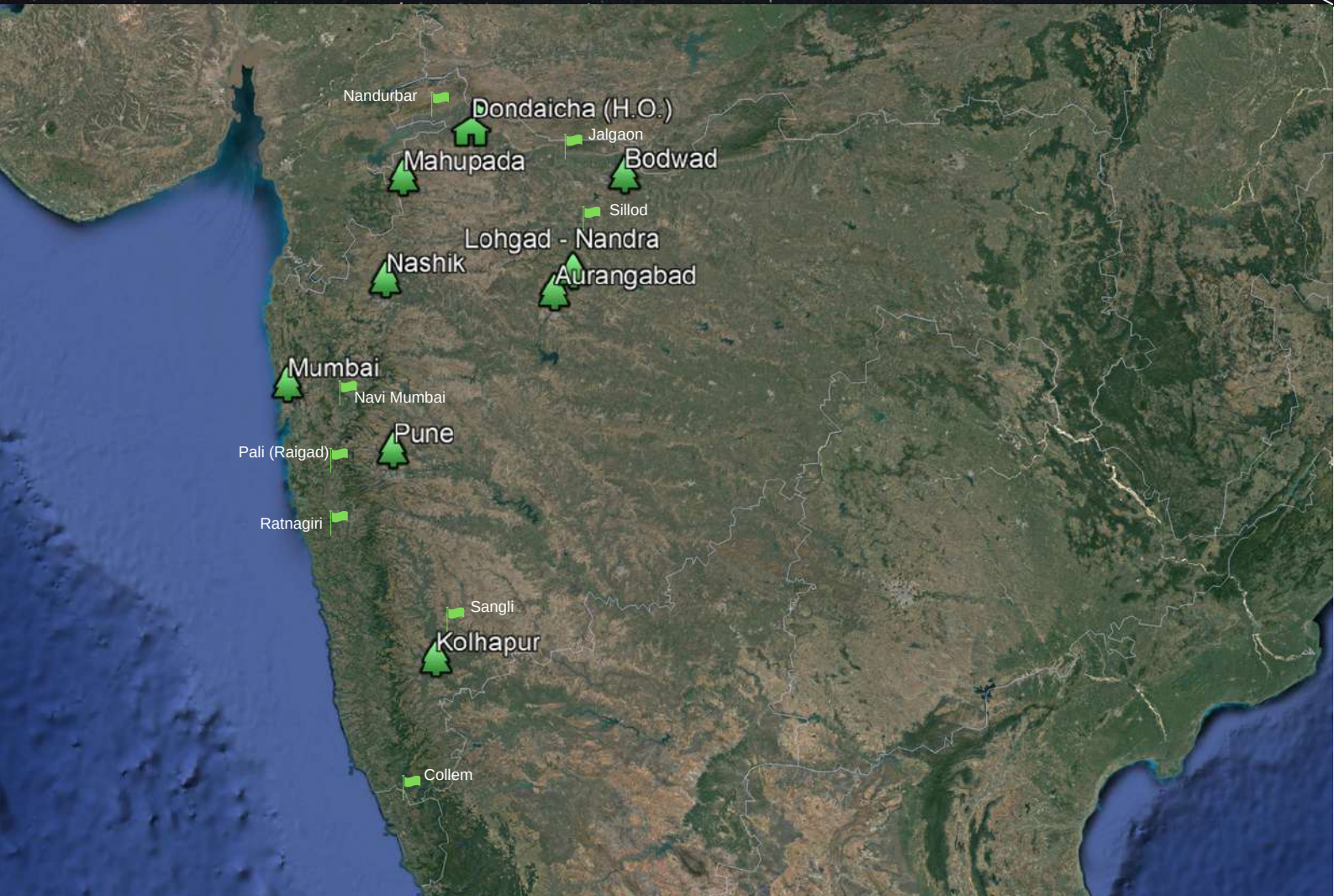
ग्रामविकास समिती,
मोहगाव



नैसर्गिक सप्तसंपदांद्वारे शाश्वत विकास

Gramvikas Samiti, Mohgaon

Our Presence



'Water scarcity' is drastically affecting our planet. It has always been known that the quantity of water available on Earth is limited, but in the last few years we have started experiencing the unavailability of this important resource. And in all this scenario, India is being severely affected. Water scarcity in India is a year-round problem that affects roughly 1 million people. In addition to harming India's vast rural and urban populations, water scarcity has a significant impact on the environment and agriculture. Despite having a population of over 1.3 billion people, India possesses just 4% of the world's fresh water resources. Aside from the unequal availability of freshwater, water scarcity in India is caused by the drying up of rivers and reservoirs throughout the summer months, just before the start of the monsoons across the nation. Climate change has exacerbated the situation in recent years, causing delayed monsoons and, as a result, the drying up of reservoirs in some locations. Other things that make India's water shortage worse include a lack of infrastructure and government monitoring, as well as unmanaged water pollution.

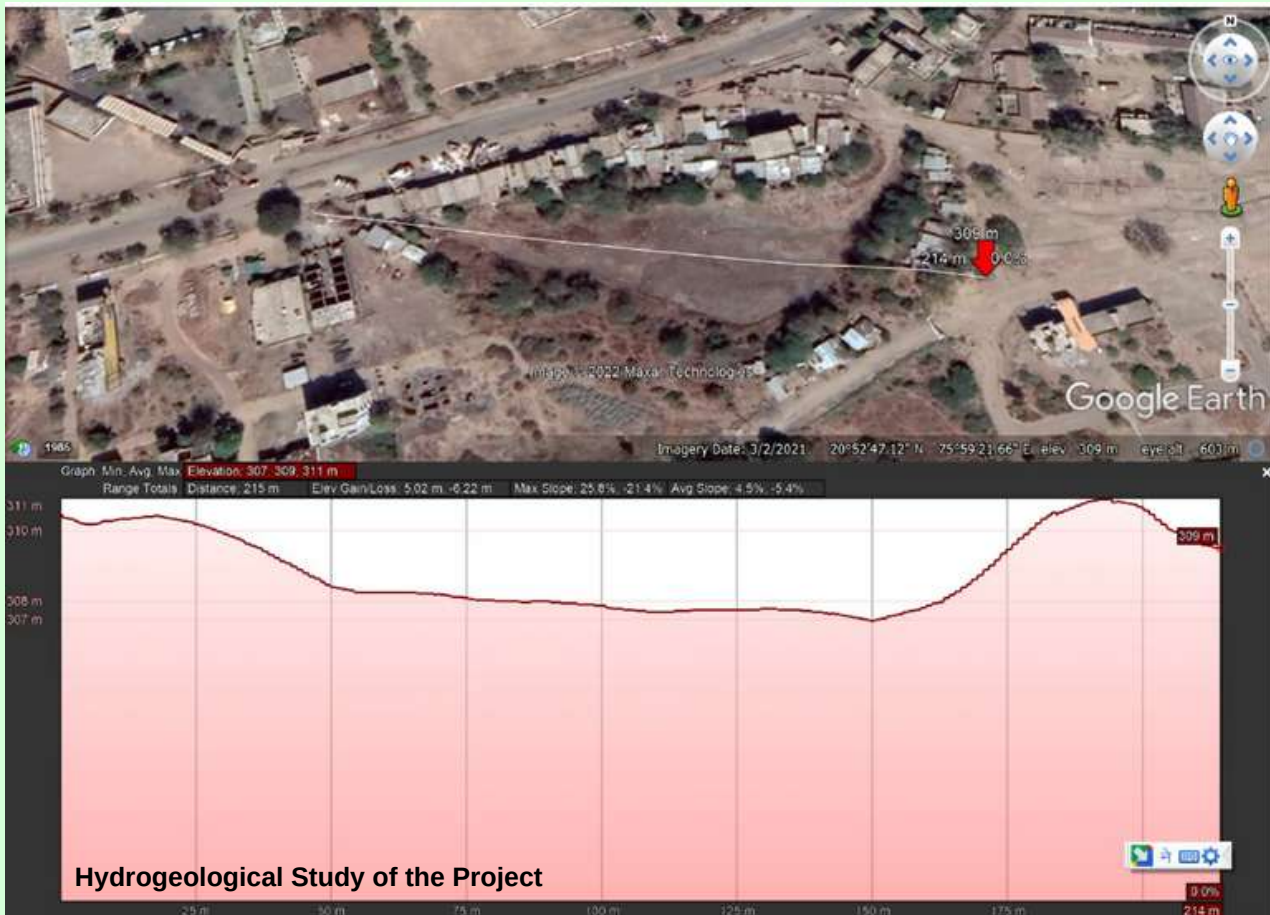
In India, the state of Maharashtra is experiencing a water crisis of unparalleled proportions. Following years of drought, river currents have ebbed, water levels in dams and reservoirs have dropped, and over-exploitation of groundwater has created worries about long-term water supplies. In the state, Northern Maharashtra is one of the most affected areas. Both the rural and urban populations are being affected by this severe issue. The same is the problem in Bodwad, a relatively moderate town and the ancestral place of India's ex- and first female president, Shrimati Pratibhatai Patil.

Bodwad town has several lakes in the settlement on which people depend for the purposes of drinking and agriculture. Day by day, the water level of these lakes is decreasing drastically. which is affecting the local environment and biodiversity. The situation worsens in the summer season; in the months of April and May, people get the water supply every 15 days.

To overcome this tragic situation, the Pruthvi Molachi Foundation and Suba Foundation, along with some local people of Bodwad, came together and organised the "**Ecosystem Restoration Project, Bodwad**".

Well Inventory and Hydrogeological survey

A thorough Well Inventory and Hydrogeological Survey has been conducted for the program. Bodwad area's hydrologic and geologic properties at depth are studied in the hydrogeological survey. Insights gained from such the investigation are used to create Lithological Plots. The process included a thorough analysis of the filtration capacity and water-carrying capacity of the rocks at different depths. Also evaluated is the innate capacity of these rocks to either store water or repel water. We investigated the strength of water flow via holes or cracks to record the pressure, kind, and quality of the water under the earth's surface. Groundwater chemistry, seasonal changes in water table levels, water supply, use, and balance all are gleaned through this study. In short, the hydrogeological context of the subsurface are uncovered with the use of these geophysical methods.





First Project Meeting on 28-29 Oct 2021



Samvad Program on 17th Jan 2022

Project Video Link

<https://www.youtube.com/watch?v=LUpzefrDuiE&t=29s>

The Impact

Awareness on Environment and Natural Resources Management among

200+ villagers

A complete **Participatory Action Plan** for the ecosystem restoration of the Bodwad and area surroundings.





Project:



Gramothan
Sustainable Rural Development Programme, Mahupada

People in rural regions, which might be remote and sparsely inhabited, benefit from rural development when their standard of living and economic prospects are enhanced. Historically, agriculture and forestry—activities that require vast amounts of land—have been at the forefront of rural development efforts. But the nature of rural regions has altered due to shifts in global manufacturing networks and rising urbanisation. Economic activity in rural areas is shifting away from mining and agriculture and toward tourism and specialty manufacturing and leisure. A broader set of development objectives, not only providing incentives for ag or resource-based firms, has emerged as a result of the recognition that rural areas need to have a broader view of development. The growth of rural areas depends on several factors, including access to education, the encouragement of entrepreneurship, the construction of necessary physical facilities, and the improvement of social networks. Another distinguishing feature of rural development is the priority placed on locally developed economic strategies. Unlike metropolitan areas, which have many commonalities, rural areas are marked by their uniqueness. This is why several strategies for fostering growth in rural areas are used across the world.

The project is primarily implemented in the Mahupada, a tribal hamlet from Dhule District. Population of approximately 700 people have made the eco-friendly decision to call Mahupada home. Quite simply, the pinnacle of harmonious coexistence between humans and the natural world. Pruthvi Molachi Foundation has made the decision to help the people achieve Sustainable development. The community has split into two committees, the Forest Committee and the Village Committee. The Village Transformation model, which prioritises sustainability's dynamics, will be used to shape the future of this community. The livelihood, skill and lifestyle development is a need in the tribal villages of our nation. Tribal people from these hamlets are not familiar with the mainstream market, education and culture, which is arising many problems related to communication and relation development of these people. The development of environment, education and culture can be a strategic way to enhance the livelihood, skill and lifestyle of these people. Along with the development of these various aspects, a plan for future will be derived which will guide us and the villagers for developing the further developmental strategies.

The Impact

As a part of livelihood development and climate action part of the project, two small agroforestry-horticulture demonstration plots of

100 Mango Trees

have been created; directly benefitting

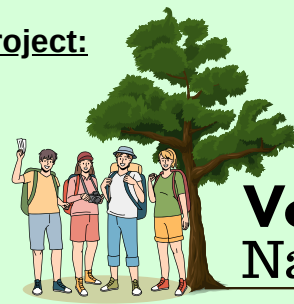
two marginal farmers

and indirectly impacting over **50 farmers**.



Natural Resources Conservation

Project:



Voluntourism Nature Camps

Idea:

To achieve the Sustainable Development of Tribal Villages by utilizing the power of Volunteerism and Tourism.

Issue:

Livelihood, Educational needs of Tribal villagers
Tourism and Entertainment needs of Urban people.

The Impact

Improvement in **Educational Facilities**

Livelihood Development

Forest Conservation

A feel of **increased confidence** among the villagers

A Sustainable Relationship is formed between Urbans and Rural Tribals which is opening many doors of possibilities for the mutual benefits...



Women Empowerment



Project:



AHILYA

Action for Health,
Inclusion, Leadership,
Youth & Agriculture
for women

Activities:

- Support to **Van-Bhaji Mahotsav** organised at Mahupada by Gramvikas Samiti.
- Establishment of 2 **Women Self-Help Groups** at slum areas of Dondaicha, Dist. Dhule
 - 1. Shri Gopalkrushna Prakruti Mahila Bachat Gat
 - 2. Ahilyabai Holkar Prakruti Mahila Bachat Gat
- **Health Check-up and Treatment Camps for women** in slum areas of Dondaicha, Dist. Dhule
- Inclusion of women in Tree Plantation and Conservation



Project:



Prakruti Parisamvad

This project aims at delivering seminars, webinars, workshops and forum discussions on the topic of environmental conservation. Following webinars have been conducted,

- संत वाङ्मयातील पर्यावरण (Environment in Saint Literature)
 - Link: <https://www.youtube.com/watch?v=TEEnBLw1cWCI>
- Pet Talks Episode 1 | Shakti and Ranjan
 - Link: <https://www.youtube.com/watch?v=4i3qMNqZW3k>
- Pet Talks Episode 2 | Coco and Apoorva
 - Link: https://www.youtube.com/watch?v=bTQMW_Z8B28
- Holistic Approach of Dr Mahesh Barve towards Tree Plantation and Conservation
 - Link: <https://www.youtube.com/watch?v=z1mE0oMSxj8>
- महाराष्ट्र (नागरी क्षेत्र) वृक्ष संरक्षण व जतन अधिनियम कायदा १९७५ | Maharashtra (Urban Areas) Tree Protection and Preservation Act, 1975
 - Link: <https://www.youtube.com/watch?v=ThYEcOulCNA>

Project:

Podcast Link:

- <https://www.pruthvimolachi.org/podcast-1>
- <https://open.spotify.com/show/0BP3NELAbTyYURQfGFkG1q>
- <https://music.amazon.com/podcasts/97b6364d-9407-4d15-a8bb-55fccc97d814/pruthvi-molachi-podcast>



Episode list:

- Pilot Episode of Baaton Ke MUSAFIR... Pruthvi Molachi Podcast.... Rashtrabhasha - Hindi
- Baaton Ke MUSAFIR... Pruthvi Molachi Podcast.... Kisse aur KavitaYe.....
- Baaton Ke MUSAFIR... Pruthvi Molachi Podcast.... Plastic Mukh Bharat.....

Other Activities:

Education

Pen and Notebook Distribution: On the occasion of Janajati Gaurav Din (Bhagwan Birsa Munda Jayanti), notebooks and pens were distributed among the students of Zilla Parishad School at Mahupada by Pruthvi Molachi Foundation. The village and forest development committee, Mahupada and ZP teachers cooperated in this. Notebooks and pens symbolize the future of our village. Bhagwan Birsa Munda also thought of the future and chanted the slogan "Abua Raj Ate Jana, Maharani Raj Tundu Jana" and encouraged all the converted tribes to abandon the Christian way and worship nature in their Hindu tribal way. The Pruthvi Molachi Foundation will always strive to keep this umbilical cord connected to nature uninterrupted.



Rural Library: Established a rural library "Kansara Mauli Sarvajanic Vachnalay" at Mahupada, Dist. Dhule. This Library exhibits over 300 books. This will help in boosting the educational activeness of the village and also help the children and youth as availability of extra curricular books is ensured, helping in improved reading habits of the tribal children and youth.



Researches and Publications

Research paper:

Physico-Chemical Analysis and Identification of Sources of Water Pollution at Rankala Lake in Kolhapur, Maharashtra, India

Anagha Raut, Parag Panchabhai

International Research Journal of Modernization in Engineering, Technology and Science (e-ISSN: 2582-5208), Volume 3, Issue 12, December-2021, Impact Factor: 6.752

IRJETS
e-ISSN: 2582-5208
International Research Journal of Modernization in Engineering Technology and Science
(Peer-Reviewed, Open Access, Fully Refereed International Journal)
Volume:03/Issue:12/December-2021 Impact Factor- 6.752 www.irjmets.com

PHYSICO-CHEMICAL ANALYSIS AND IDENTIFICATION OF SOURCES OF WATER POLLUTION AT RANKALA LAKE IN KOLHAPUR, MAHARASHTRA, INDIA
Anagha Raut*¹, Parag Panchabhai*²
*¹Student, Department Of Environment Science, Shivaji University, Kolhapur, Maharashtra, India.
*²Director, Pruthvi Molachi Foundation, Dondaicha, Maharashtra, India.

हि प्लोनेट अर्थ
The Planet Earth
A Magazine of Society, Nature and Us... English | हिंदी | मराठी
An Initiative of PRUTHVI MOLACHI FOUNDATION
www.pruthvimolachi.org
VOL. 01 MARCH 2022

इवलेसे रीम लाविले बदारी...

HAZARDS OF TECH.
Certainly you cannot simply remove technology from your life but you can try to differentiate between luxury and necessity.

SHORTFALL
Shortfall, the hinge that will decide the end game.

THE HAMLET OF MAHU
The story of sustainable journey of Mahupalle, a tribal hamlet in northern Maharashtra.

The Planet Earth

The most effective tool we have in the fight against climate change is a conscious public. Here's where environmental journalism comes in; by informing and enlightening the public, it helps make a difference. The importance of the work that experts do in the fields of sustainability, biodiversity, and renewable energy continues to grow.

On the occasion of World Wildlife Day (3rd March 2022) we have published the first issue of "The Planet Earth", a Multilingual E-Magazine to promote positive changes, stories, innovations, impacts and news on all the aspects of social-work, environment, rural development and sustainable development.

Link to Download: <https://www.pruthvimolachi.org/publications>

Pruthvi Molachi Foundation in Press



धुळे सिटी 30-12-2021

मोहगाव येथे झाले कंसरा माउली सार्वजनिक वाचनालयाचे उद्घाटन

प्रतिनिधी । पिंपळनेर

मोहगाव (ता.साक्री) येथे कंसरा माउली वाचनालयाचे उद्घाटन जि.प. सदस्य धिरज आहिरे यांच्या हस्ते करण्यात आले.

या वाचनालयात सुमारे ३०० विविध पुस्तके उपलब्ध आहेत. यामाठी पूव्ही मोलाची फाउंडेशन, दोंडईचा व कृषी विज्ञान केंद्र, धुळे यांचे देखील सहकार्य लाभले. कार्यक्रमाच्या अध्यक्षस्थानी बारीपाडा येथील चैत्राम पवार होते. कृषी विज्ञान केंद्राचे डॉ. अशोक पाटील, ग्रामविकाससह संयोजक विनोद कुंवर, पंचायत सदस्य रमेश गांगुडे, पं. स. सदस्य शांताराम कुंवर, सरपंच, पिंपळगाव ममजु गावकऱ्याड, माजी सरपंच उत्तम



मोहगाव येथील 'कंसरा माउली वाचनालय' उद्घाटनसंगी उपस्थित जि.प.सदस्य धिरज आहिरे, पं.स. रमेश गांगुडे, शांताराम कुंवर सरपंच, उपसरपंच व ग्रामस्थ अदी.

देशमुख, मधुकर भोई, तुषार गांगुडे, रमेश चौर, प्रवीण चौर, गावित, विजय राजत, रमेश गावित, मुलाराम गावित, शरद गावित, सोमनाथ गांगुडे, लक्ष्मण महाले, गौरीराम गावकऱ्याड तसेच ग्रामस्थ राजू गावित, मल्लेश गावकऱ्याड, व गावातील विद्यार्थी मोठ्या संख्येने उपस्थित होते.

12. Pruthvi Molachi Foundation catalyzes the development and conservation process.

Pruthvi Molachi Foundation is a group of social and environmental enthusiasts to catalyze the process of development and conservation. The team includes environmentalists, geologists, entrepreneurs, researchers, statisticians, microbiologists, and grass-root social workers.

Ways to help -

- Donate directly to Pruthvi Molachi Foundation
- Follow their work on Facebook and Instagram

13. Climate Connect Earth accelerates climate action worldwide by connecting organizations and individuals.

Climate Connect is a donation-funded nonprofit working to make an impact on climate change.

<https://thriveglobal.com/stories/2817216/>

IssueWire

How it Works About Us Editorial Writing Pricing Login Sign

Indian environmental NGO - Pruthvi Molachi Foundation successfully completes one year

Maharashtra, India Nov 15, 2021 (Issuewire.com) - The nascent environmental non-profit start-up, Pruthvi Molachi Foundation completes its incredible first year in August 2021. Starting their journey exactly one year ago, the company has been extremely successful in doing what they wanted, which is spreading awareness about environmental sustainability and conservation. Not just on social media, they have conducted various projects, events, activities, and more to pierce the minds of the people and make them understand the need for sustainability. In their quest to help people live a more sustainable life, they have done research to facilitate policy development, build institutional capacity, and facilitate independent dialogue with civil society.

The idea of spreading awareness on environmental conservation started solely through social media. But they soon realized, it was not enough to just spread awareness, and digging to the root of the problems using their knowledge and expertise was needed. That is when they formed the Pruthvi Molachi Foundation and registered it as a section 8 company on 5th August 2020. They soon started interacting with experts from various industries and sectors to learn from them and flourish further. In just one year, they have conducted research, training, webinars, and more to help people get the full picture of a sustainable lifestyle.

Pruthvi Molachi Foundation arranged a webinar on Sustainable Development Goals (SDGs) stated by the United Nations. They worked in both rural and urban areas to know about the root of the problems. Some of their notable projects are, social awareness project E-Jagruti, Sustainable Rural Development Programme Gramothan, webinar on environmental conservation Project Prakriti Parisamvad, and training and support program for farmers Krushi



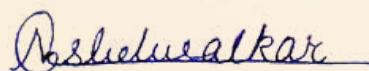
Pruthvi Molachi Logo

<https://www.issuewire.com/indian-environmental-ngo-pruthvi-molachi-foundation-successfully-completes-one-year-1716294559173588>

Financials

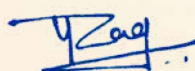
Balance Sheet as at 31st March 2022

Sr No	Particulars	Note No	As on 31/03/2022	As on 31/03/2021
I	Equity and Liabilities			
1)	Shareholder's Funds			
	Share Capital	1	-	-
	Reserves and Surplus	2	14,521	(852)
2)	Share Application Money Pending Allotment		-	-
3)	Non-current Liabilities			
	Long Term Borrowings	3	33,819	22,019
	Deffered Tax Liability (Net)		-	-
	Other Long Term Liabilities	4	-	-
	Long Term Provisions	5	-	-
4)	Current Liabilities			
	Short Term Borrowings	6	-	-
	Trade Payables	7	-	-
	Other Current Liabilities	8	-	-
	Short Term Provisions	9	16,735	11,800
	Total		65,075	32,967
II	Assets			
1)	Non-current Assets			
	Fixed Assets	FA		
	i) Tangible Assets		-	-
	ii) Intangible Assets		-	-
	iii) Capital Work-in-progress		-	-
	iv) Intangible Assets in Development		-	-
	v) Fixed Assets Held for Sale		-	-
	Non-current Investments	10	-	-
	Deffered Tax Assets (Net)		-	-
	Long Term Loans and Advances	11	-	-
	Other Non-current Assets	12	-	-
2)	Current Assets			
	Current Investments	13	-	-
	Inventories	14	-	-
	Trade Receivables	15	-	-
	Cash and Cash Equivalents	16	50,335	20,967
	Short-term Loans and Advances	17	-	-
	Other Current Assets	18	14,741	12,000
	Total		65,075	32,967



Niharika S Belwalkar
Director
Pruthvi Molachi Foundation





Parag G Panchabhai
Director
Pruthvi Molachi Foundation



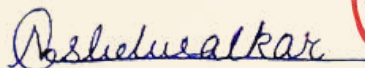
K. Kiruthiga
Chartered Accountant
Kanakkupillai.com



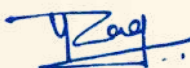
Financials

Statement of Profit and Loss for the year ended on 31st March 2022

Sr No	Particulars	Note No	As on 31/03/2022	As on 31/03/2021
I	Income			
	Revenue from Operations	19	5,17,476	53,010
	Other Income	20	-	-
	Total Revenue		5,17,476	53,010
II	Expenditure			
	Cost of Material Consumed	21	-	-
	Purchase of Stock in Trade	22	-	-
	Changes in Inventories of Finished Goods	23	-	-
	Work in Process and Stock in Trade			
	Employee Benefit Expenses	24	1,12,000	-
	Finance Costs	25	-	96
	Depreciation and Amortisation		-	-
	Other Expenses	26	3,87,908	53,766
	Total Expenses		4,99,908	53,862
	Profit before Exceptional & Extraordinary Items & Tax		17,568	(852)
	Exceptional Item - Creditros written back			
	Profit before Extraordinary Items & Tax		17,568	(852)
	Extraordinary Item			
	Profit/(Loss) Before Tax		17,568	(852)
	Tax Expense			
	Current Tax		4,935	-
	Earlier year Tax		-	-
	Profit/Loss for the period		12,632	(852)
	Basic Earnings Per Share		-	-



Niharika S Belwalkar
Director
Pruthvi Molachi Foundation



Parag G Panchabhai
Director
Pruthvi Molachi Foundation



K. Kiruthiga
Chartered Accountant
Kanakkupillai.com

Get Involved

Donate

State Bank of India

A/c Name: Pruthvi Molachi Foundation

A/c No.: 39946904480

IFSC Code: SBIN0002151



7038081829@okbizaxis



Volunteer / Internship

We work with volunteers and interns for our various projects. If you want to be a part of this endeavour and bring change in the society, please contact us for various opportunities.

Social Media



www.facebook.com/PruthviMolachi



www.instagram.com/pruthvi_molachi



www.linkedin.com/company/pruthvimolachifoundation



<https://www.youtube.com/c/PruthviMolachi>



<https://twitter.com/PruthviMolachi1>



PRUTHVI  **MOLACHI**
FOUNDATION

ADDRESS

Shri Gopalkrushna Mandir, Gopalpura, Dondaicha
Dist. Dhule, MH, India. Pin: 425408

PHONE

+91 7038081829, 7709004439, 9423875976

E-MAIL

contact@pruthvimolachi.org

WWW.PRUTHVIMOLACHI.ORG